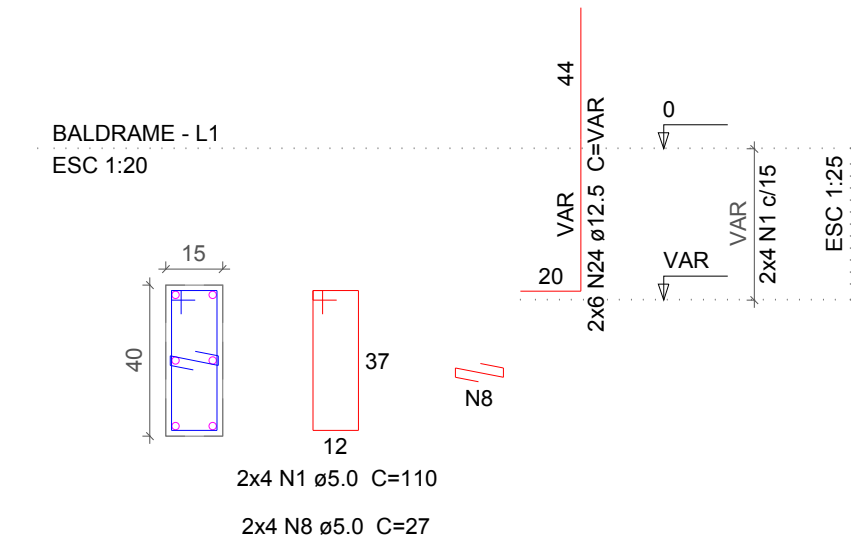
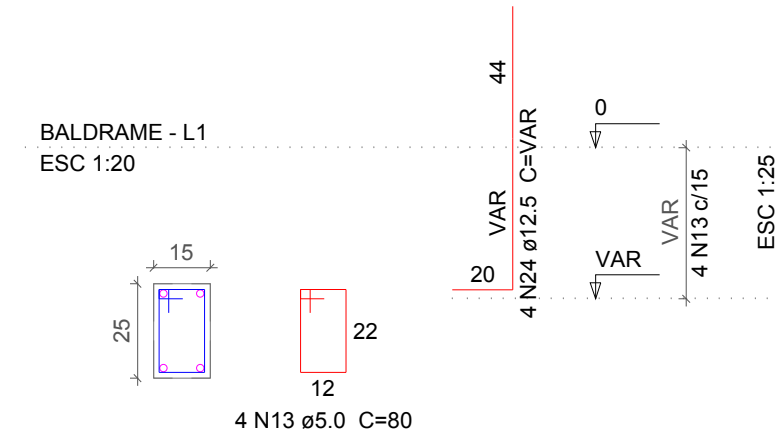


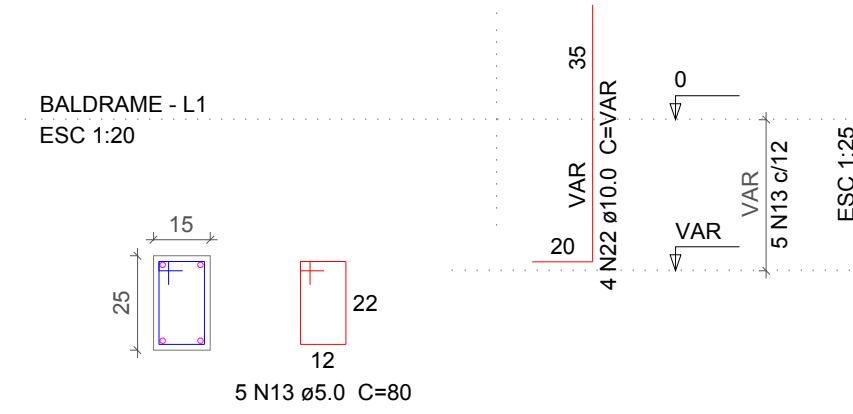
P7=P11



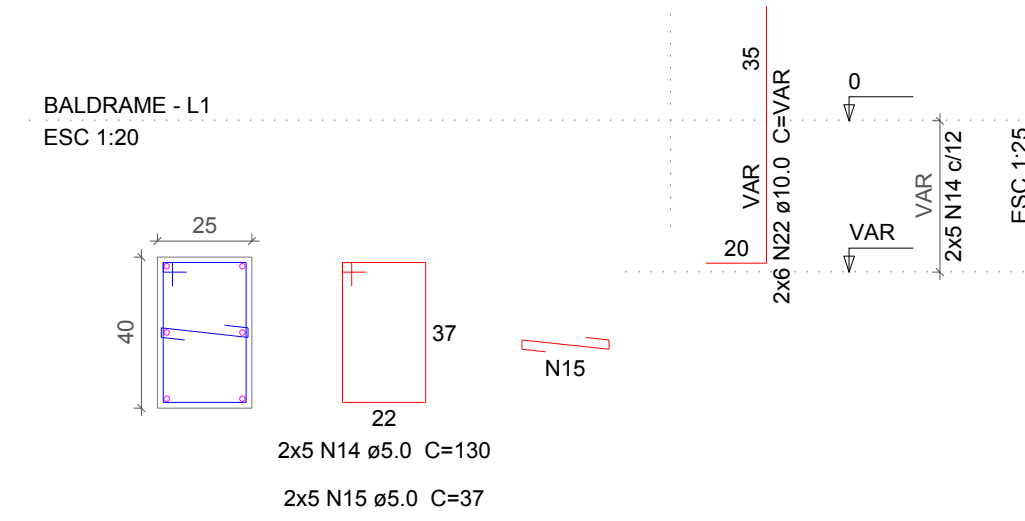
P22



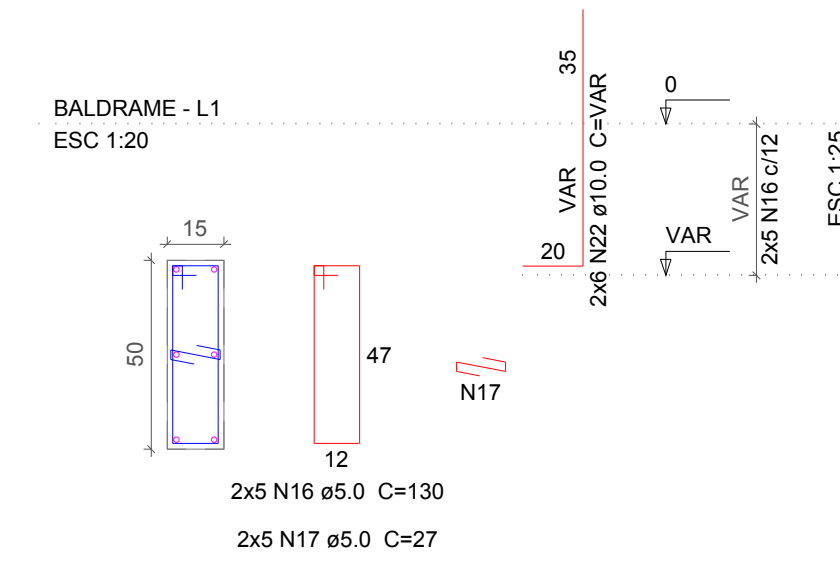
P23



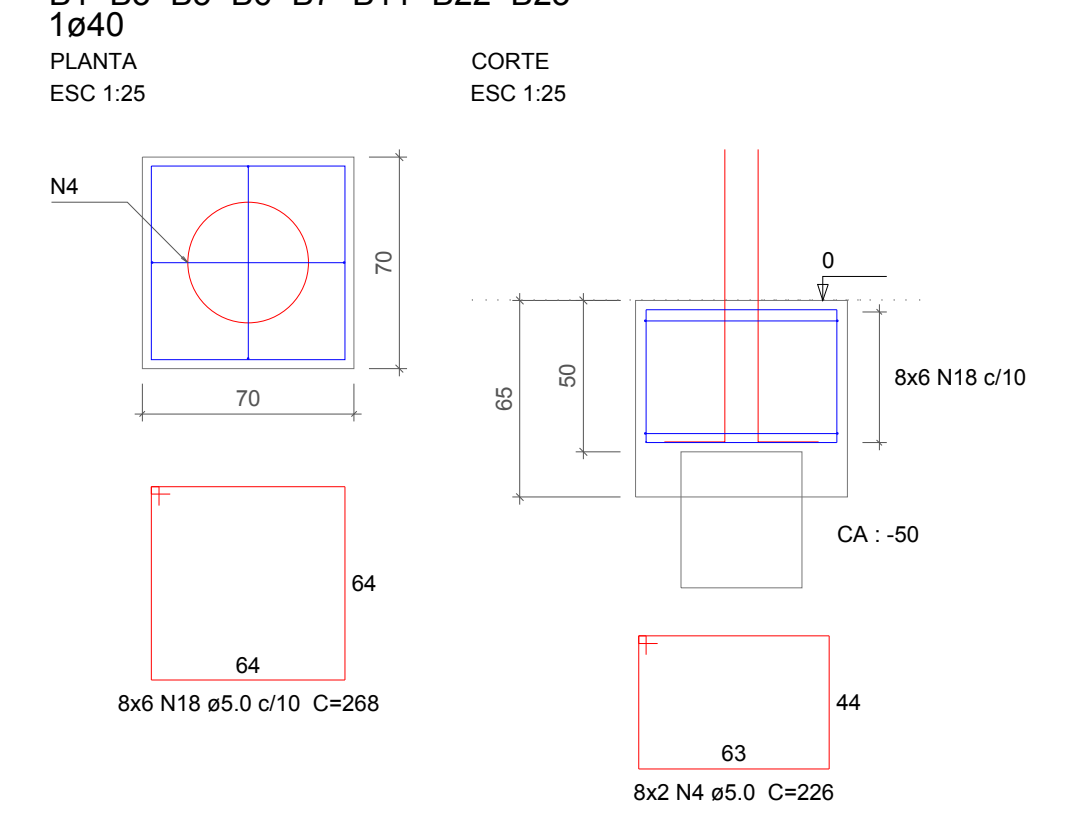
P1=P3



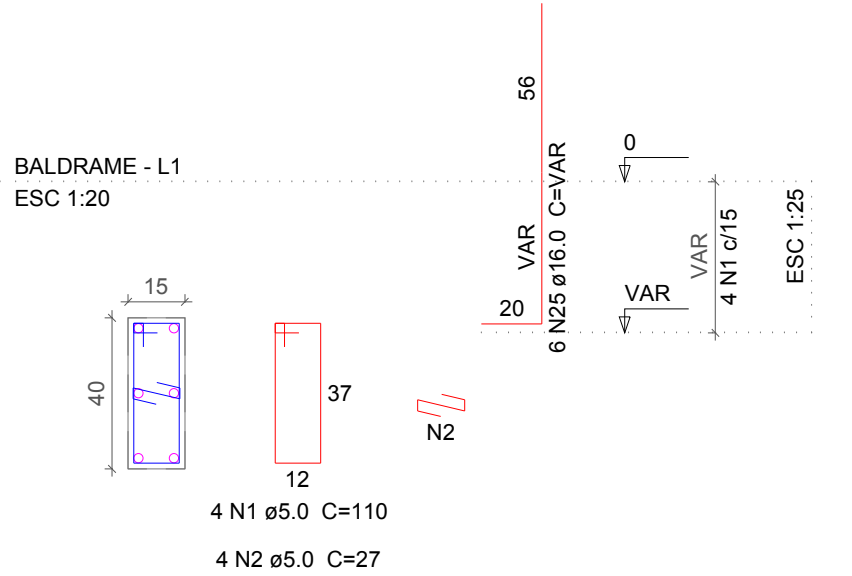
P5=P6



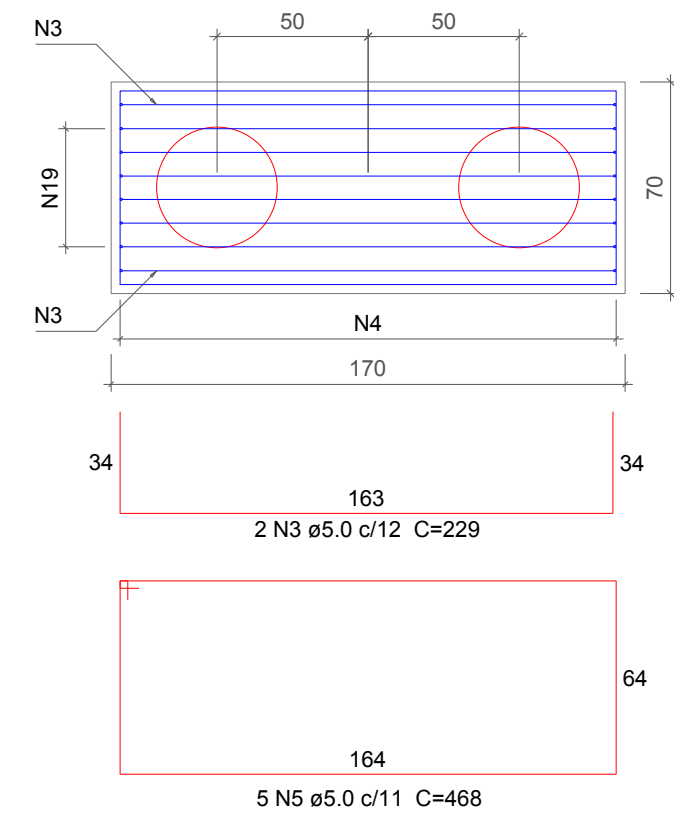
B1=B3=B5=B6=B7=B11=B22=B23



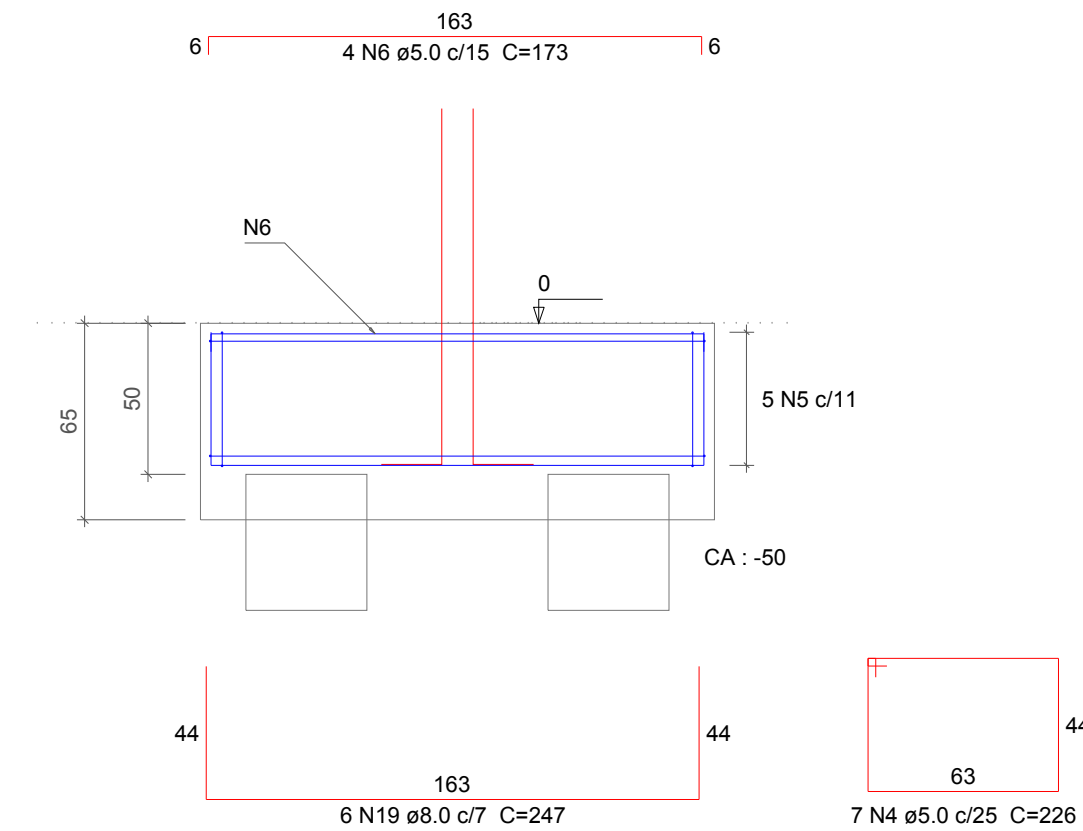
P2=P8=P10



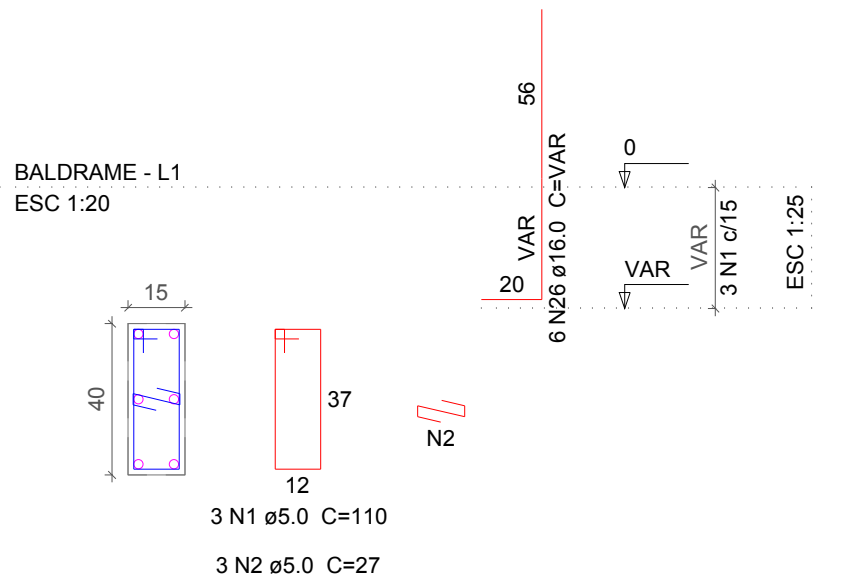
B2=B8=B10
2ø40
PLANTA
ESC 1:25



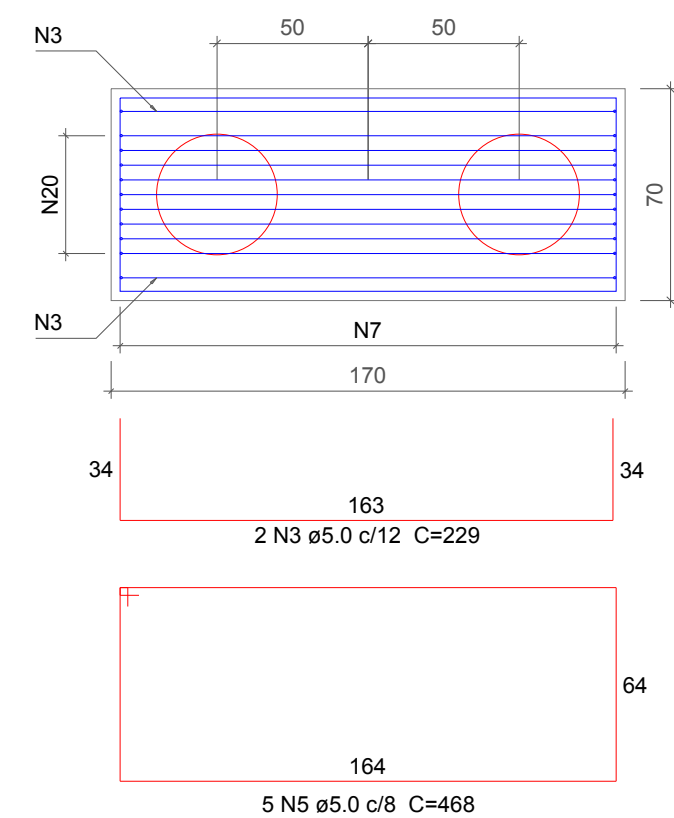
CORTE
ESC 1:25



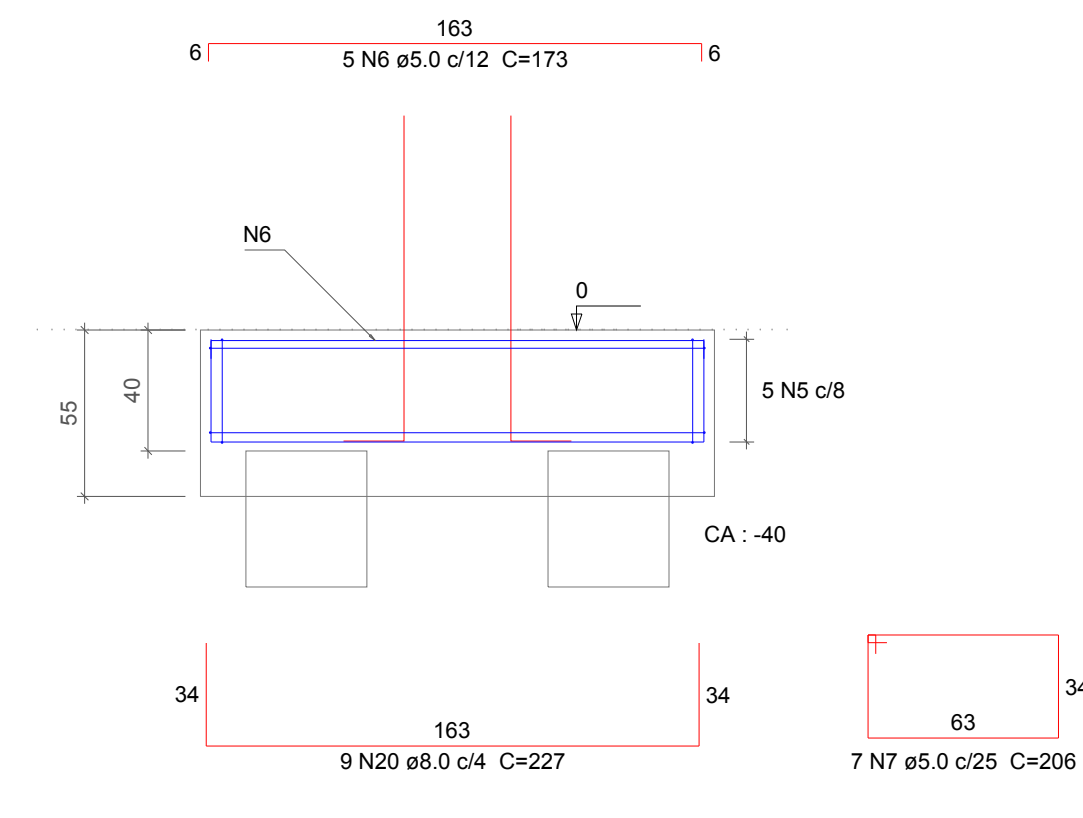
P4



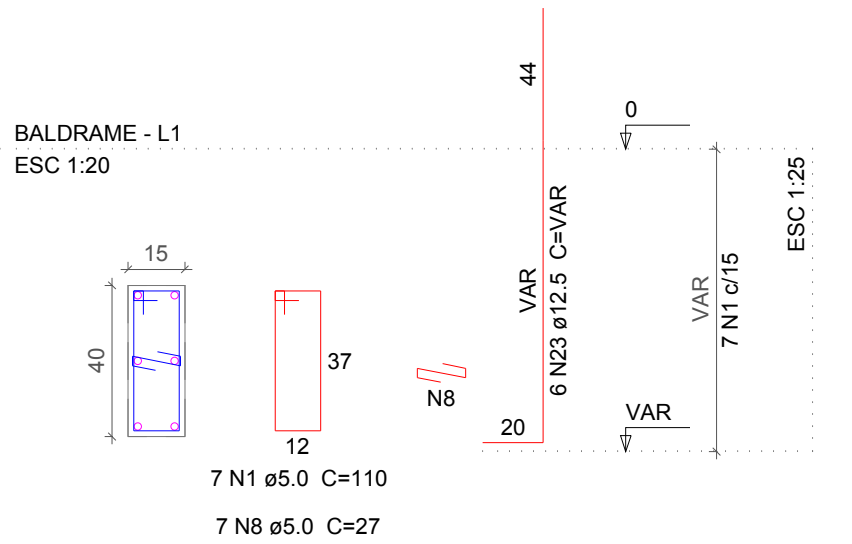
B4
2ø40
PLANTA
ESC 1:25



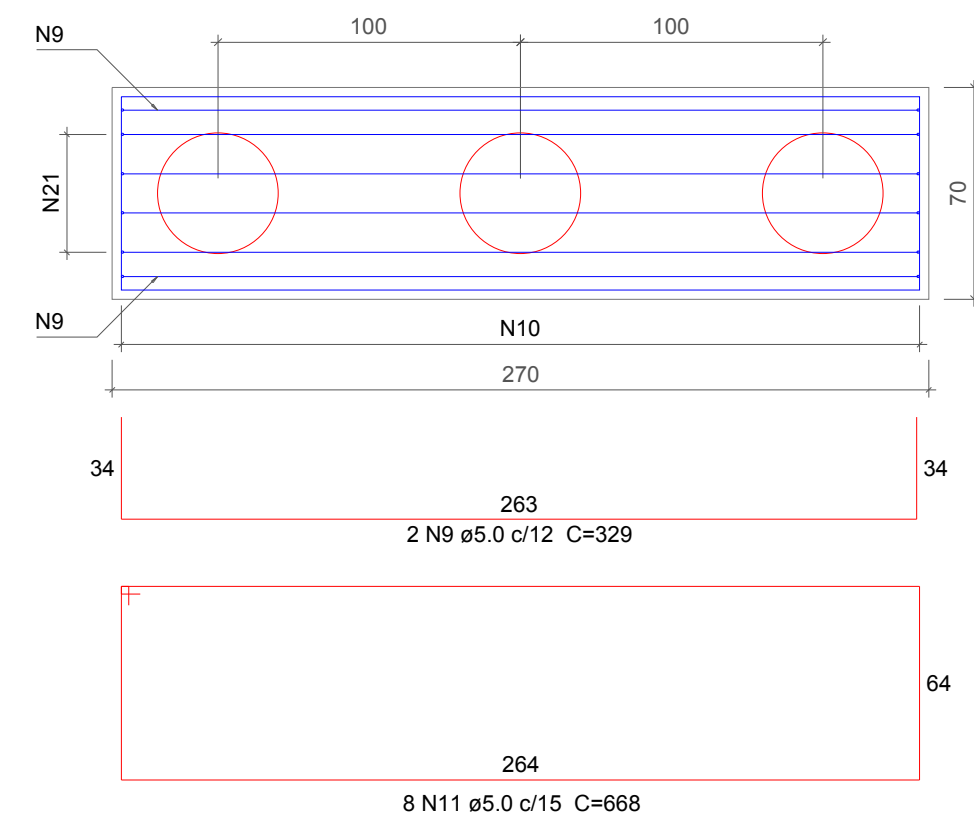
CORTE
ESC 1:25



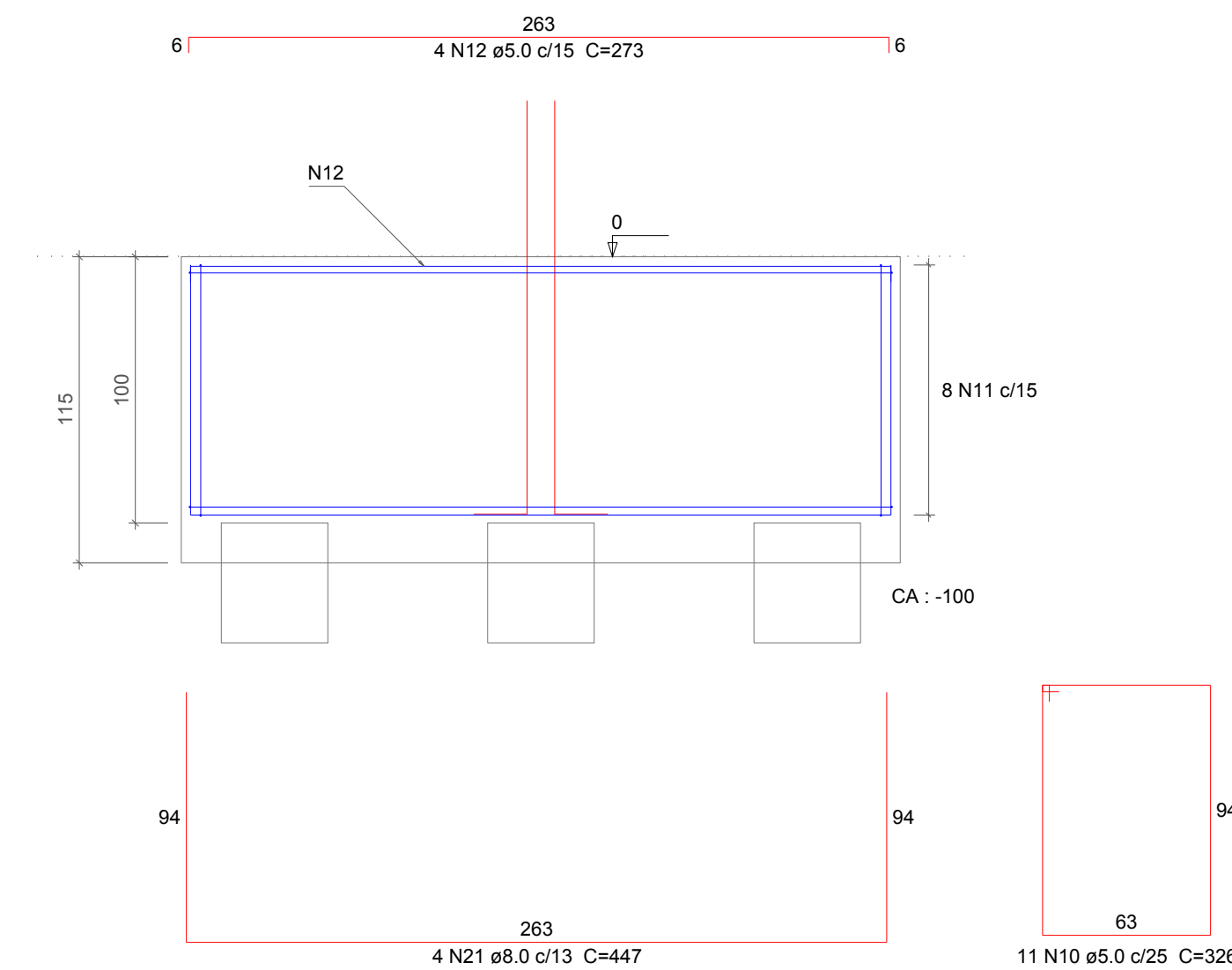
P9



B9
3ø40
PLANTA
ESC 1:25



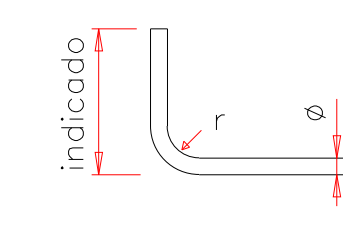
CORTE
ESC 1:25



- 1- AS DIMENSÕES ESTÃO EM CENTÍMETRO, A BITOLA DOS FERROS EM MILÍMETRO.
- 2- A EXECUÇÃO DAS ARMADURAS DEVERÁ OBEDECER AS PRESCRIÇÕES DA NORMA NBR-6118, E DA EB-3.
- 3- AS ESPECIFICAÇÕES CONTIDAS NESTE PROJETO NÃO PODERÃO SER ALTERADAS SEM A CONSULTA PRÉ-VIA AO PROJETISTA.
- 4- OS GANCHOS NAS EXTREMIDADES DAS BARRAS DA ARMADURA, DEVERÃO SER DOBRADOS, COM RAIO DE CURVATURA CONFORME O DETALHE "A".
- 5- AS BARRAS DA ARMADURA DEVERÃO SER MANTIDAS COM SEGURANÇA NOS LUGARES PREVISTOS DURANTE O LANÇAMENTO E O ADENSAMENTO DO CONCRETO. USAR ESPAÇADORES ADEQUADOS PARA GARANTIR O COBRIMENTO DE CONCRETO.
- 6- CONFERIR TODAS AS MEDIDAS ANTES DO CORTE, DOBRAMENTO E MONTAGEM DAS ARMADURAS.

DETALHE A

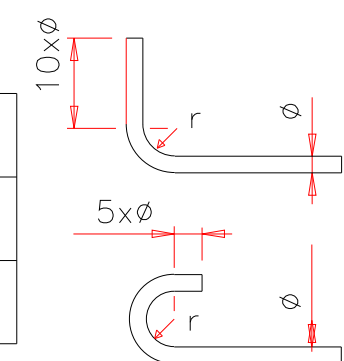
(ARMADURA LONGITUDINAL)



BITOLA ø	CA50	CA60
<20mm	2,5xø	3xø
≥20mm	4xø	—

DETALHE B

(ESTRIBOS)



BITOLA ø	CA50	CA60
≤10mm	1,5xø	1,5xø
>10mm	2,5xø	—